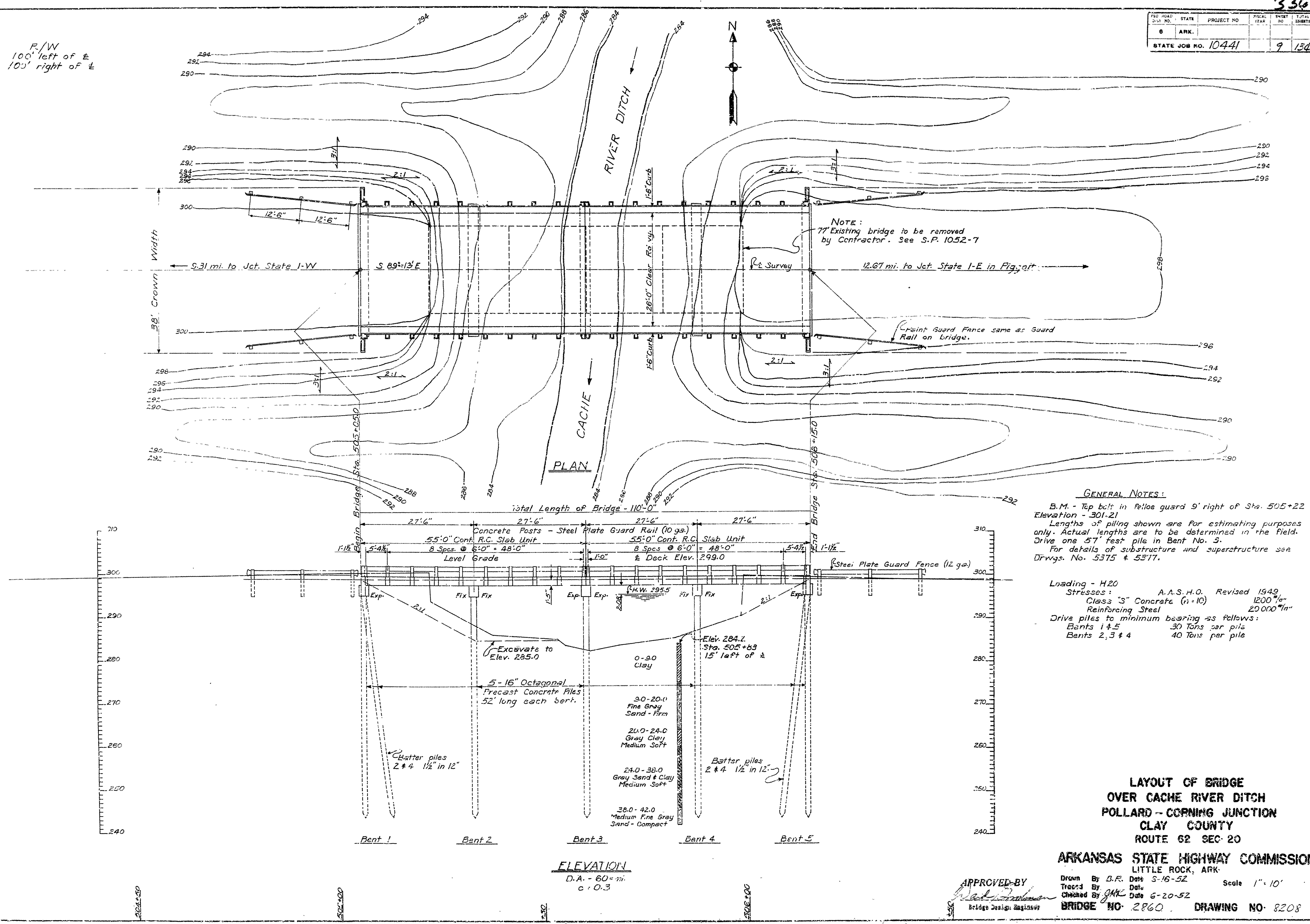
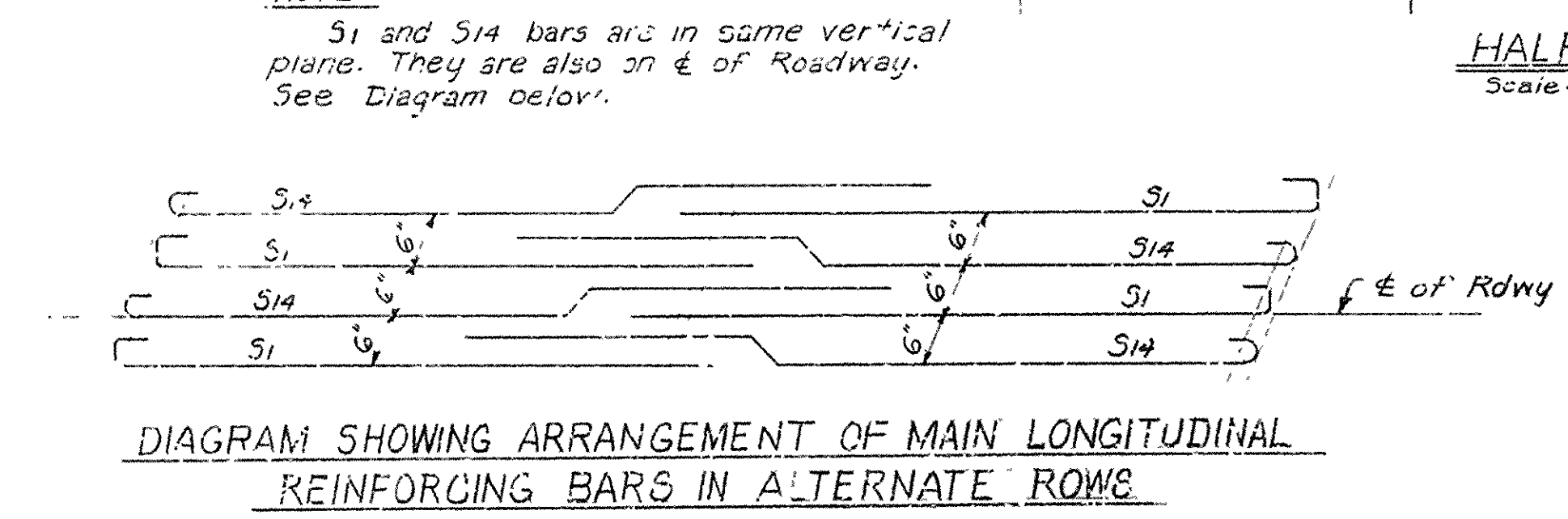
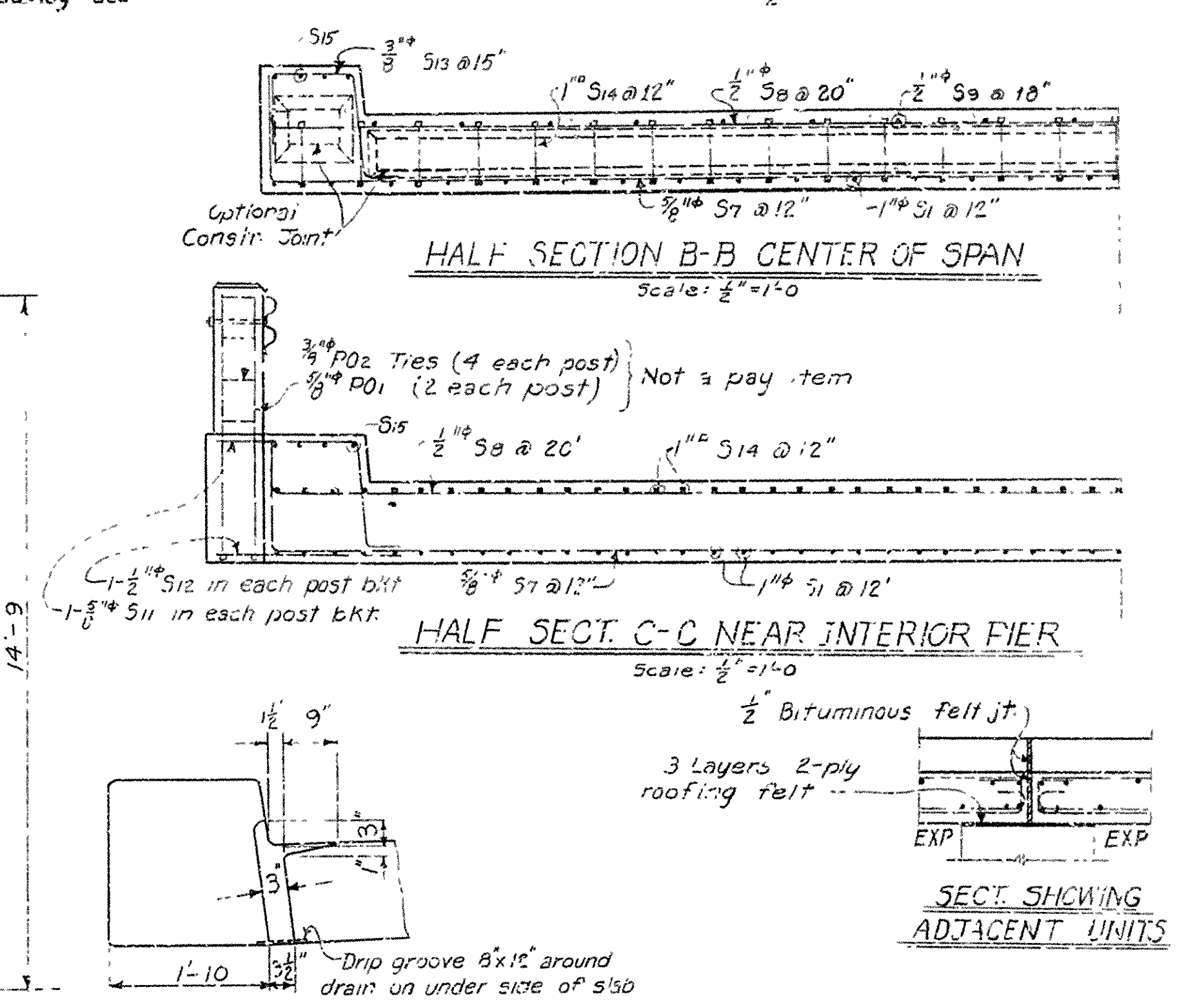
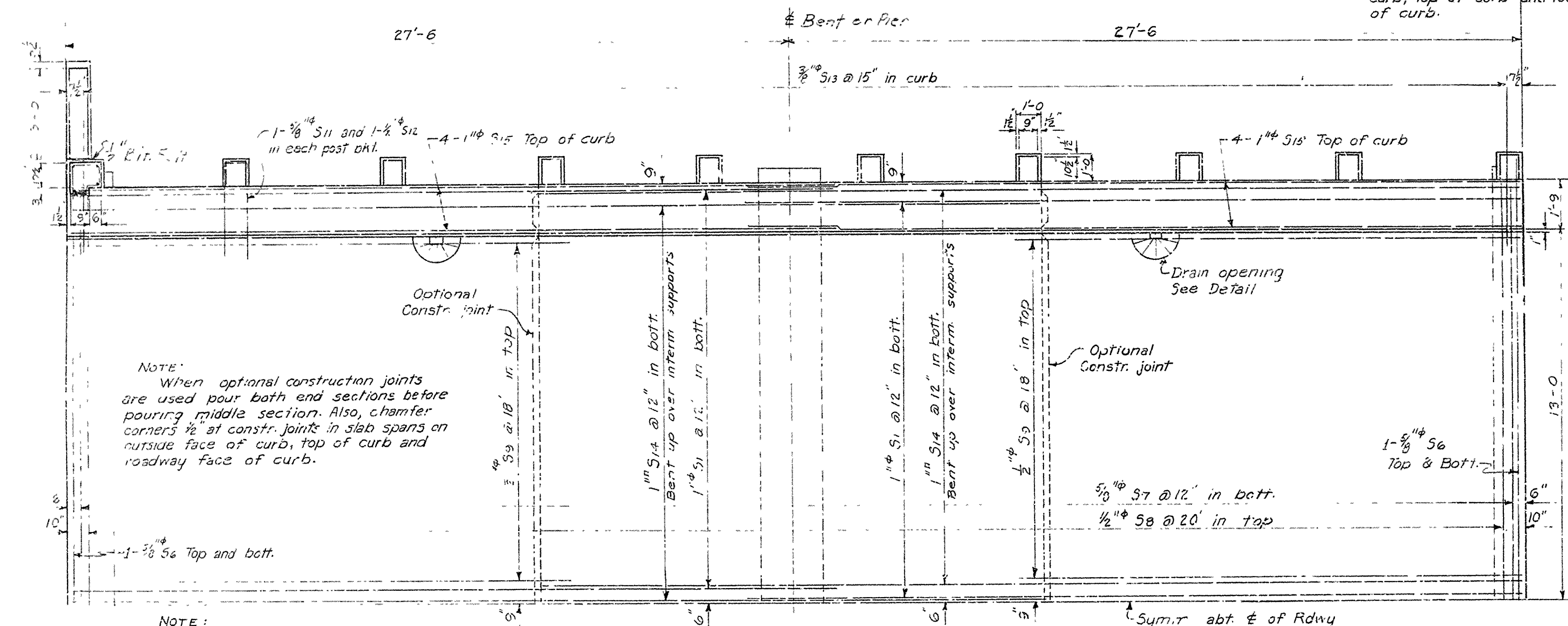
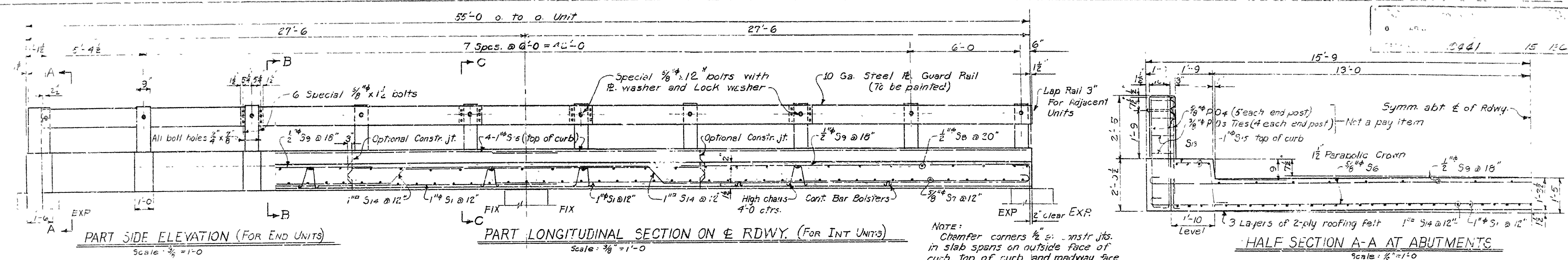
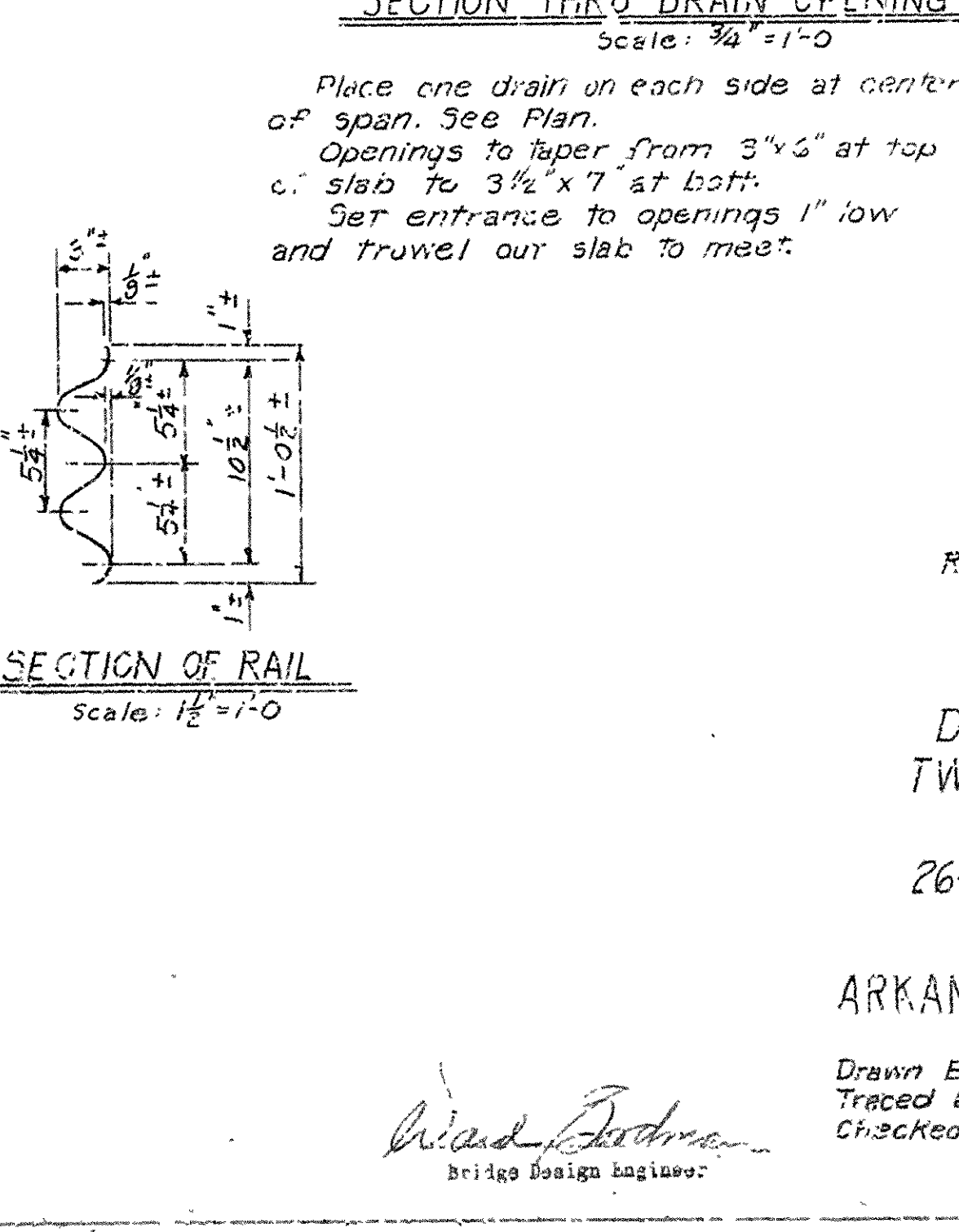


FED ROAD DIST NO.	STATE	PROJECT NO	FISCAL YEAR	SHEET NO	TOTAL SHEETS
6	ARK.				
STATE JOB NO. 10441				9	134





LIST OF BARS FOR ONE 33' UNIT



H-20 LOADING

Load Distribution to Slab:  
Dead Load: 209 #/ft.  
Live Load: 0.174 wheels/ft of width  
or Lane Loads  
Uniform Load: 55.7 #/ft.  
Concentrated Load 1567 #/ ft. of width  
Impact: 30 %  
Unit Stresses:  
CRSS "S" m.s. (n=10) 1200 #/sq.  
Reinforcing Steel 20,000 #/sq.

Revisions:  
Pouring sequence - LPC 6-20-52

DETAILS OF STANDARD 55'-0"  
TWO SPAN CONTINUOUS R.C. SLAB  
SPAN LENGTHS 27'-6", 27'-6"  
26'-0" CLEAR RDWY. 2 CURES @ 15'-6"

ARKANSAS STATE HIGHWAY COMMISSION  
LITTLE ROCK, ARK.  
Drawn By: WMM Date: 4/25/51  
Traced By: Date: Scale: As shown  
Checked By: JKK Date: 4-25-51  
DRAWING NO. 5377

### GENERAL NOTES

All concrete to be Class "S". All exposed corners to be chamfered  $\frac{3}{8}$ " unless otherwise noted.

Reinforcing steel to be deformed bars of intermediate grade. Shop lists and bending diagrams must be submitted by the contractor and approval secured before fabrication is begun.

All reinforcing steel shall be accurately located in the forms and firmly held in place by means of steel wire supports, sufficient in number and size to prevent displacement during the course of construction and to keep the steel a proper distance from the forms. The wire supports will not be paid for directly but will be considered subsidiary to the item of reinforcing steel. Shop lists and bending diagrams must be submitted for approval.

Payment for "noting and bituminous felt" shall be included in the price bid for Class "S" concrete.

The steel plate guard rail shall be of the type shown or an equivalent rigid type as approved by the Engineer. The steel plate guard rail, including all concrete posts, shall be paid for at the unit price bid per linear foot for "Steel Plate Guard Rail".

SPECIFICATIONS: Arkansas State Highway Commission Standard Specifications for Road and Bridge Construction, adopted March 1, 1940

	Cot #1	Single Unit Bridge
	2	End Unit
	3	Interm. Unit